

## Mini Printer Server with One USB 2.0 Port

**One USB 2.0 Port Printer Server** -- LevelOne FPS-9022 is a Mini-sized Ethernet print server which is designed to perform with any stand-alone USB printer resource to network users. This unit is equipped with a 10/100Mbps auto-sensing Ethernet port featuring either 10Mbps or 100Mbps network connections as well as a USB 2.0 port that instantly attaches to a USB port enabled printer.

**Supports Peer-to-Peer and Server-Based Printing** --Our LevelOne FPS-9022 supports both Peer-to-Peer and Server-based printing. Peer-to-Peer printing, which allows LAN clients connect directly with the printer server to execute printing functions; and Server-based printing, which allows other customers send print material first to a server which then connect with the printer server to execute printing jobs.

**Supports Complete Printing Methods and Major OS**-- The FPS-9022 printer server provides LPR, IPP, SMB/TCP, Raw Printing and Unix Logical Printer printing methods. Simply choose the best method according to your environment. This unit is compatible with all major operating systems including Windows™ 98SE/ME/NT/2000/XP, NetWare (3.x above), MAC OS and Unix/Linux environments to provide cross-platform accessibility.

**Easy Installation and Configuration**-- With its friendly web-based management interface, FPS-9022 is ready for users easily to configure and maintain this device through a general web browser. Clients can immediately utilize any features of this product simply by attaching the cables and turning on the power. The small-sized design will save limited space and thus can be located anywhere on the network.

**Fault-Tolerant Firmware Upgrades** – Users need not worry about errors occurring in the middle of an upgrade thus preventing the printer server from operating. This unit's fault-tolerant upgrade function allows for re-upgrades should problems occur during the initial upgrade.

With its standard features, the FPS-9022 offers the most exacting network printing solution for any environment from SOHO office to Enterprise thus increasing the productivity and saving costs.



**FPS-9022**

### Related Products



**FPS-9021**

Mini Printer Server with One Parallel Port



**WPS-9121**

11g Wireless Mini Printer Server with One Parallel Port



**WPS-9122**

11g Wireless Mini Printer Server with One USB 2.0 Port

## Key Features

- Complies with IEEE 802.3, IEEE 802.3u Standards
- Provides one USB 2.0 printer port that can attach directly to a printer's USB port
- Shares printer to all LAN users
- Supports Peer-to-Peer printing (TCP/IP/IPX/NetBEUI)
- Supports Server-based printing (Novell/Windows)
- Easy to install and setup with Web-based interface
- Supports Fault-tolerant upgrade capability
- Supports Network Protocols: TCP/IP, IPX/SPX, NetBEUI and AppleTalk
- Supports Printing Protocols: LPR, IPP, SMB/TCP, Raw Printing and Unix Logical printing
- Compatible with major Operating System: Windows™ 98SE/ME/2000/XP, Netware (3.x above), Unix/Linux

## Technical Specification

### Networking

- **Standards Compliance**  
IEEE 802.3 10BaseT Ethernet  
IEEE 802.3u 100Base-TX Fast Ethernet
- **Ports**  
1 x RJ-45 10/100 Mbps port

### Hardware

- **CPU**  
RISC CPU
- **Flash**  
512KB NOR Flash
- **RAM**  
2MB SDRAM
- **Printer Port**  
1 x USB 2.0 Type A Port

### Print Server Specification

- **Supports Network Protocols**  
TCP/IP  
IPX/SPX  
NetBEUI  
Apple Talk
- **Supports Printing Protocols**  
LPR  
IPPSMB/TCP  
Raw printing  
Unix Logical Printing
- **Compatible Operating System**  
Windows™ 98SE/ME/2000/XP  
NetWare (2.x Above)  
MAC OS  
Unix/ Linux

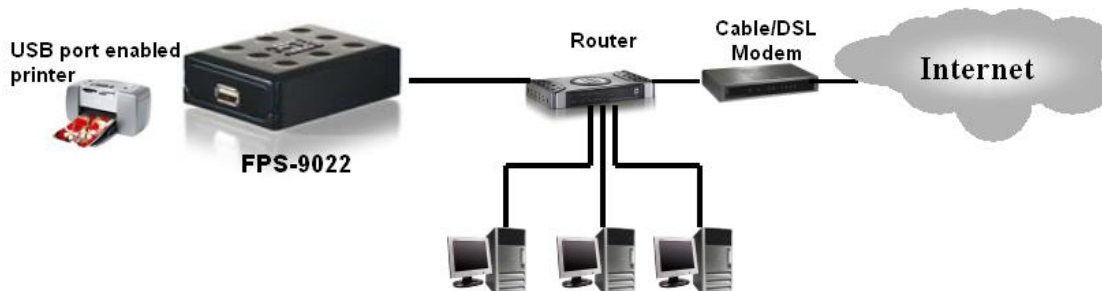
### Management

- **Interface**  
Web-based management Interface  
Windows Configuration Utility
- **Upgrade**  
Fault-Tolerant Upgrade capability

### Physical Spec

- **LEDs**  
System power and status indicator  
System activity and Network link indicator
- **Power**  
7.5 VDC, 0.5A Power Adapter
- **Temperature**  
Operating: 0-55°C
- **Humidity**  
Operating: 10-90% (RH)
- **Dimension**  
105mm(L) \* 104mm(W) \* 125mm(H)
- **Weight**  
420g
- **EMI and Safety**  
FCC, CE

## Product Diagram



## Ordering Information

- FPS-9022: Mini Printer Server with One USB 2.0 Port

For more information, please contact your LevelOne representative, or visit our website  
All technical specifications are subject to change without notice.  
All mentioned brand names are registered trademarks and property of their owners

[www.level1.com](http://www.level1.com)