

24-port Gigabit Web Smart Switch

Gigabit Ethernet Solution – LevelOne GSW-2440 Gigabit switch equips 24 Gigabit ports that lead you to a real Gigabit connection. Users are now able to transfer large and high bandwidth-needed files faster and hence get a real efficiency improvement.

Fast and Reliable Technology -- GSW-2440 offers users with fast and reliable network. The store-and-forward architecture filters errors and forwards packets in a non-blocking environment. Flow control ensures the correctness of data transmitting. The 802.3x and backpressure flow control mechanisms work respectively for full and half duplex modes. This device supports Nway auto-negotiation protocol that detects the networking speed and the duplex modes (Full/Half) automatically. Auto-MDI/MDI-X function alleviates the effort to use crossover cables.

Web-based Management Interface -- Friendly web management features are ready for users easily to configure and maintain the device through a general web browser. You can partition the switch into 24 groups using port-based VLAN technology. This switch also supports Quality of Service (QoS) to prioritise traffic for time-sensitive applications.

Easy to Use -- For instant error detection, the switch is equipped with a full range of LEDs to help you monitor and troubleshoot problems on your network. The slim and unique design fits easily in any space-limited location. Users can locate the switch on the desktop. With the accessory kits, the switch can either be stacked or mounted to the rack to save space.



GSW-2440

Related Products



GSW-1621
16G + 1 SFP Switch



GSW-2420
24-port Gigabit Switch



GSW-1641
16G +1 SFP Web Smart Switch

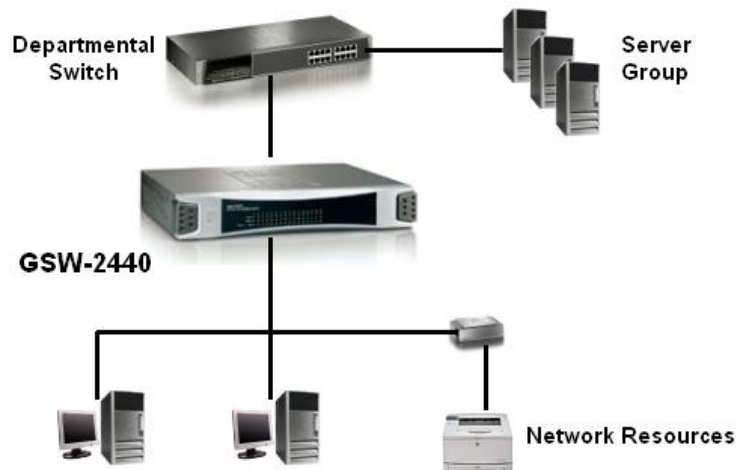
Key Features

- Complies with IEEE 802.3, 802.3u, 802.3ab and 802.3z
- 24 x 10/100/1000 Mbps RJ-45 Nway ports
- Up to 48Gbps Backplane bandwidth
- Supports 8K absolute MAC addresses
- Supports 500K Bytes RAM for data buffering
- Supports 9K bytes Jumbo frame
- Supports up to 8 ports and 12 groups port aggregation
- Support QoS for better communication quality
- Front-panel diagnostic LEDs
- Supports back-pressure (half duplex) and flow control (IEEE 802.3x)
- Web-based management interface
- Internal power adapter

Technical Specification

- **Standards Compliance**
IEEE 802.3: 10 BASE-T
IEEE 802.3u: 100 BASE-TX
IEEE 802.3z/ab: Gigabit Ethernet
IEEE 802.3x Flow Control for Full-Duplex
- **Interface**
24 x 10/100/1000 Mbps RJ-45 ports
- **Protocol**
CSMA/CD
- **Switching Method**
Store-and-Forward switching architecture
- **Transfer Rate**
14,880 pps for 10Mbps
148,800 pps for 100Mbps
1,488,000 pps for 1000Mbps
- **Cabling**
Ethernet: 2-pair UTP/STP Cat.3,4,5, EIA/TIA-568 100-ohm
Fast Ethernet: 2-pair UTP/STP Cat. 5, EIA/TIA-568 100-ohm
Gigabit Ethernet: 4-pair UTP/STP Cat.5, EIA/TIA-568 100-ohm
- **Backplane**
48 Gbps
- **MAC Address Table**
8K entries per device
- **Buffer**
500KBytes per device
- **LEDs**
Per Device: Power
Per Port: 10/100Mbps Link/ACT (green);
100/1000, Link/ACT
- **Power Supply**
100-240VAC/50-60Hz universal input; Internal power Supply
- **Power Consumption**
21.6 Watts (max)
- **Temperature**
Operating: 0°C -40°C
- **Humidity**
Operating: 10% - 90% Non-Condensing
- **Dimension**
270mm(W) * 187mm(H) * 43mm(D)
- **EMI and Safety**
FCC class A, CE, VCCI Class A

Product Diagram



Ordering Information

- GSW-2440: 24-port Gigabit Web Smart Switch