

24G+ 2SFP L2 SNMP Stacking Switch

LevelOne's GSW-2494 is a stackable Layer 2 switch that designed for enterprise or large workgroups connectivity applications with the non-blocking, wire-speed switching performance and advanced networking management functions.

Virtual stacking increasing scalability --This switch allows you to use a single IP to manage for a virtual stack of up to 16 units of GSW-2494, GSW-2690 or GSW-1291 thus building central management in one screen for IT supervisor as well as increasing the scalability and allowing trunks between workgroup and other resources.

Variety network interfaces --The GSW-2494 is able to integrate different network scales by offering different network interfaces, 24-port Gigabit Ethernet and 2-port SFP, to operate with your copper or fiber network, both for extending the network connection distance and leveraging your existing investment. The total 48Gbps back plane bandwidth creates high-speed backbone data transmissions and meet the requirement of heavy-duty bandwidth-consuming applications with wire-speed, non-blocking performance.

Versatile Features for Management-- The GSW-2494 supports a versatile of network management features including: Console, CLI, Telnet, Web, SNMP v1/v3, RMON, TFTP, Port Mirroring and DHCP as well as advanced traffic management options including: 802.1x, bandwidth control and support for IGMP v1/v2 Snooping. In order to increase network reliability, the switch also supports 802.1D spanning tree protocol. Moreover this switch provides seven trunk groups of 4 member ports eliminate network bottlenecks from increased bandwidth. You can partition the network into 256 VLANs using 802.1Q Tagging technology. The Class of Service (CoS) allows you to prioritise traffic for time-sensitive applications.

Easy Monitoring--With its 1U height rack-mountable size, the switch can be easily managed in a computer lab or a server room. The clearly visible status LEDs provide easy monitoring of port link activity, speed, and collision, so that you are never in the dark when it comes to the status of your data transmissions



GSW-2494

Related Products



GSW-2690
24Fast +2G/SFP L2
SNMP Stacking Switch



GSW-1291
12G L2 SNMP POE
Stacking Switch

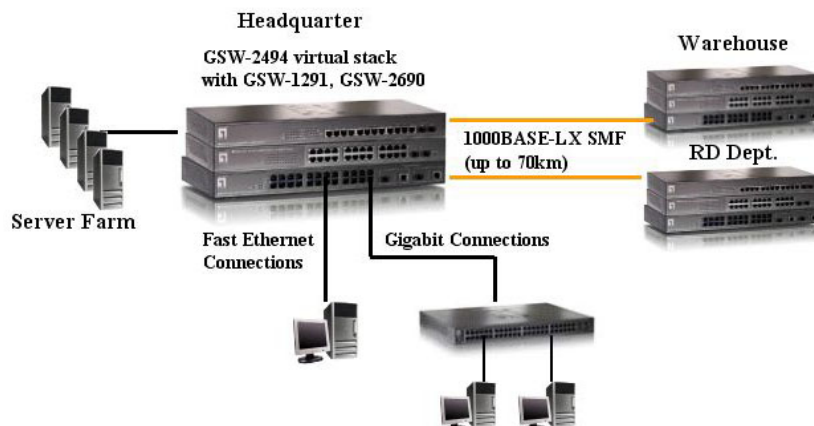
Key Features

- 24-Port 10/100/1000 Mbps copper ports and 2-Port Gigabit/SFP embedded
- Gigabit (copper/SFP) ports are compliant with IEEE802.3z and 802.3ab
- Supports virtual stack of up to 16 units of GSW-2690, GSW-2494 or GSW-1291
- MAC-based trunking with automatic link fail-over
- Supports 802.3x flow control/backpressure
- Non-Blocking full wire speed architecture
- Web-based management provides easily configuration via any web browser
- Supports Port-based VLAN and IEEE802.1Q VLAN
- Supports 802.3ad port trunking with LACP
- Supports 802.1p Class of Service with 4-level priority queuing
- "At-a-glance" LEDs for port and system status monitoring
- 19", 1U rack-mountable size

Technical Specification

- **Standards Compliance**
IEEE 802.3/ IEEE 802.3u
IEEE 802.3ab Gigabit 1000T
IEEE 802.3z Gigabit Fiber
IEEE 802.3x Flow Control and Back Pressure
- **Network Interface**
1000T: 24 x RJ-45
Fiber: 2 x mini-GBIC
- **Protocol**
CSMA/CD
- **Switch Architecture**
Store-and-Forward
- **MAC Address Table**
8K entries with Auto learning function
- **Memory**
Packet Buffer: 400Kbytes,
- **Transfer Rate**
14,880 Packets per second for 10Mbps
148,800 Packets per second for 100Mbps
1,488,000 Packets per second for 1000Mbps
- **Network Cables**
10Base-T: 2-pair UTP/STP Cat.3/4/5, Up to 100 m
100Base-TX: 2-pair UTP/STP Cat. 5, Up to 100 m
1000Base-T: 4-pair UTP/STP Cat.5, Up to 100 m
1000Base-SX LC MM: Multimode Fiber, Up to 550m
1000Base-LX LC MM: Singlemode Fiber, Up to 10km
1000Base-ZX LC MM: Singlemode Fiber, Up to 70km
- **Management Agent**
SNMP support, MID II (RFC 1213), Bridge MIB (RFC 1493), RMON MIB (RFC 1757)
- **Management**
Telnet management
Web management
Out band local Console Port: DB-9 RS-232 DCE
- **Spanning Tree Algorithm**
IEEE 802.1D Spanning Tree Protocol
IEEE 802.1s Multiple Spanning Tree Protocol
- **VLAN**
Port-based VLAN/802.1Q Tagged VLAN/ 802.1v protocol-based VLAN classification
Up to 256 active VLAN in one switch
- **QoS**
Supports IEEE 802.1p/Port/ MAC/TOS/DiffServ (Ipv4/Ipv6) based QOS Packet
Supports 4 queues per port,
Schedule Schemes: Weighted Round Robin/Fist Come Fist Service/ Strictly Priority
- **IP Multicast**
IGMP Snooping
IP Multicast Packet Filtering
- **Port Security**
Limit number of MAC addresses learned per port
static MAC addresses stay in the filtering table
- **Software Upgrade**
TFTP/ Console firmware upgradeable
- **Other Features**
Port trunk connected allowed
Bandwidth Control supported both for Egress/Ingress
- **LEDs**
Per Device: Power, CPURUN, ACT, FDX,SPD
Per 10/100/1000Mbps Gigabit TP/Fiber: Link, FB, ACT/FDX/SPD
- **Dimension**
442mm(W) * 209mm(D) * 44mm(H)
- **Power Supply**
Internal power supply: 100~240VAC, 50/60Hz
- **Power Consumption**
15 Watts (max)
- **Temperature**
Operating: 0° C ~50° C (32° F ~ 113° F)
- **Humidity**
Operating: 5% ~ 90% (Non-condensing)
- **EMI and Safety**
FCC Class A, CE

Product Diagram



Ordering Information

- GSW-2494: 24G+ 2SFP L2 SNMP Stacking Switch
- GVT-0300: SFP Transceiver fits mini GBIC (550m)
- GVT-0301: SFP Transceiver fits mini GBIC (10km)
- GVT-0302: SFP Transceiver fits mini GBIC (70km)

For more information, please contact your LevelOne representative, or visit www.level1.com
All technical specifications are subject to change without notice.
All mentioned brand names are registered trademarks and property of their owners