



Ethernet Over VDSL2 Converter (PSE)



VDS-0120

H/W Version: 1

Overview for VDSL2 Media Converters

Ethernet over VDSL2 Media Converters are innovative solutions from LevelOne that greatly extend LAN distances. These media converters send Ethernet packets at extended distances by converting and then transmitting using advanced VDSL2 protocols. This allows system installers to use regular telephone wire (RJ-11) to reach incredible distance of up to 300meters with a maximum transfer speed of 100Mbps/60Mbps. These media converters reach 3 times farther than the regular Cat.5 Ethernet cabling. No additional network devices are needed; all data is transmitted using inexpensive, easy-to-deploy RJ-11 telephone wiring.

Can a media converter also act as a PSE?

In the 802.3af Power over Ethernet standard, a PSE stands for Power Sending Equipment,

a device that can send power to another compatible device. VDS-0120 is an Ethernet to VDSL media converter as well as a PSE. In addition to sending data over an RJ-11 cable up to 300 meters, it can also send both power and data using the local RJ-45 port. This added functionality puts the most flexible deployment solutions right at the System Installers fingertips.

Fast data transfer rates, easy installation

Using VDSL technology, VDS-0120 allows users to achieve 100 Mbps download and 60 Mbps upload speeds. A great point-to-point networking solution for even the most bandwidth-hungry applications. With easy plug and play installation, SIs will have no problem using these simple yet powerful devices on their next project.



1. LEDs
2. Dip Switch
3. Power Port
4. VDSL2 Interface
5. 10/100Mbps Port

Key Features

- Compliance with IEEE802.3, IEEE802.3u and VDSL/VDSL2
- Provides One Piano Switch for Mode Configuration
- Low-Latency for Video/Voice/Data Applications
- 802.3af PoE PSE compatible(VDS-0120)
- 802.3af PoE PD compatible(VDS-0130)

Works Well With



VOI-7100
PoE IP Phone



FCS-1081
PoE IP Camera

Technical Specification

VDSL Transmission

ITU-T G.993.1,G.993.2VDSL/VDSL2 and SG15Q4MT
Compliance
Trellis Code with 1024 DMT bins
1* RJ11 Port for DSL

LAN Interface

Auto-Detection for 10/100 Base and Half/Full duplex
Fully compatible with IEEE802.3/IEEE802.3u/IEEE 802.3af
Automatic MDIX Function
RJ-45 Connector x 1 with PSE function

Physical Specifications

LEDs
Power,LAN,DSL, M/S , PSE

Power Supply

12VDC 2A (PSE)

Dimension

120x90x 28(mm)

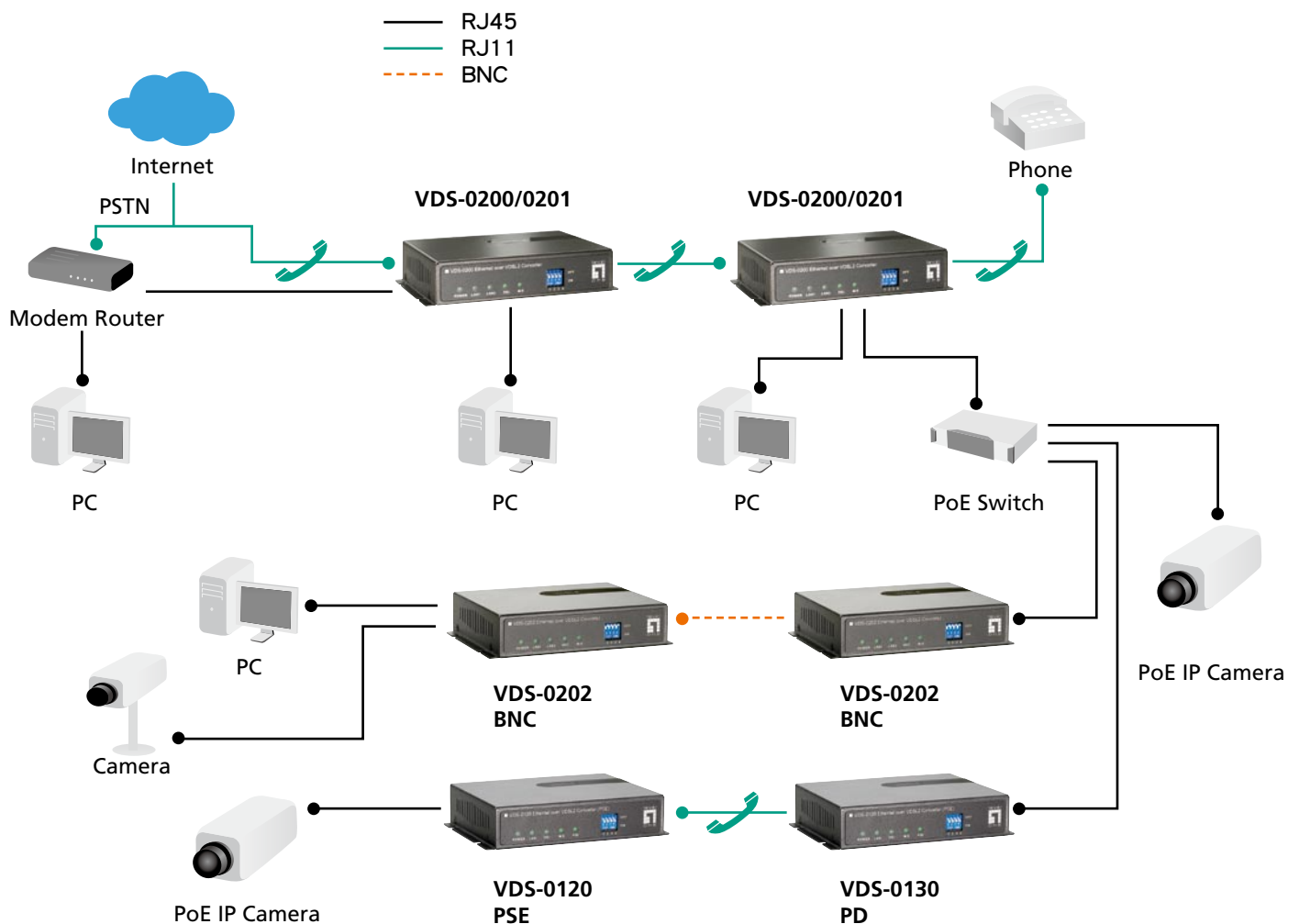
Operating Environment

Humidity: 5% to 95% non-condensing
Temperature: 0 ~ 50 degree C

EMI Certifications

FCC Rules Part 15 Class B
CE

Product Diagram



Order Information

VDS-0120: Ethernet Over VDSL2 Converter (PSE)

Package Contents

VDSL2 Converter, Power Adapter(Not included with VDS-0111& VDS-0130, power sent via cabling), User's Manual, Telephone line(Not included with VDS-0202)