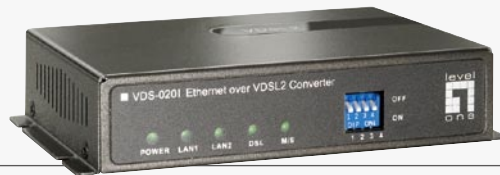




# Ethernet over VDSL2 Converter (AnnexB)



VDS-0201

H/W Version: 1

## Why convert Ethernet to VDSL?

The LevelOne VDS-0201 converts your data from Ethernet to VDSL, making it easy to send high-bandwidth data over long distances. This new technology uses traditional twisted-pair telephone wiring instead of expensive Cat.5 cables.

## New technology = cost-effective deployment

When using VDSL2 (Very High Speed Digital Subscriber Line) technology, users can transmit data up to 300 meters without having to add expensive Ethernet switches or cables to extend the network reach. And with 100Mbps downstream and 60Mbps upstream, VDSL2 technology provides ample space for all high bandwidth usage.

**Fast transfer speeds? Yes.  
Easy Installation? Yes.**

VDS-0201 works especially well in applications where traditional copper phone lines are already installed: apartments, condominiums, hotels, university campus, etc. There is no need to run expensive Ethernet cables and installers can easily integrate VDSL technology into the existing network. The VDS-0201 is plug and play ready and requires minimum installation time.

## Customized settings

Each VDS-0201 also allows for customized settings for advanced use. Using a built-in DIP switch, users can customize the behavior of the device to match the desired network configuration.

## Annex B

For networks that utilize ISDN telephone systems.



1. LEDs
2. Dip Switch
3. Power Port
4. Telephone Port
5. VDSL2 Interface
6. 10/100Mbps Ports

## Key Features

- Supports a VDSL connection up to 2km over single pair copper wire
- Provides 100Mbps downstream and 60Mbps upstream over 300m
- Features selectable Fast and Interleaved modes
- Selectable fixed data rate and fixed SNR margin
- Features 4 Dip Switches for Configuration Settings
- Low-Latency for Video/Voice/Data applications

## Works Well With



**FSW-0811**  
8-Port Fast Ethernet Switch



**WBR-6001**  
N\_Max Wireless Broadband Router

## Technical Specification

### VDSL Transmission

ITU-T G.993.1/2, SG15Q4 DMT Compliance  
 Trellis Code with 1024 DMT bins  
 Max Data Rate: 100/60 Mbps  
 1 x RJ-11 Port for DSL  
 1 x RJ-11 Port for Telephone

### LAN Interface

Auto-Detection for 10/100 BaseT and Half/Full duplex  
 High performance bridge for Ethernet extension  
 Fully compatible with IEEE802.3/IEEE802.3u  
 Automatic MDIX Function  
 RJ-45 Connector x 2  
 ITU-T G.993.1/2, SG15Q4 DMT Compliance  
 Trellis Code with 1024 DMT bins

### LEDs

Power, LAN1, LAN2 , DSL, M/S

### Power Supply

DC 5V, 1A/2A (optional)

### Dimension

120mm (L) x 90mm (W) x 28mm (H)

### Operating Temperature and Humidity

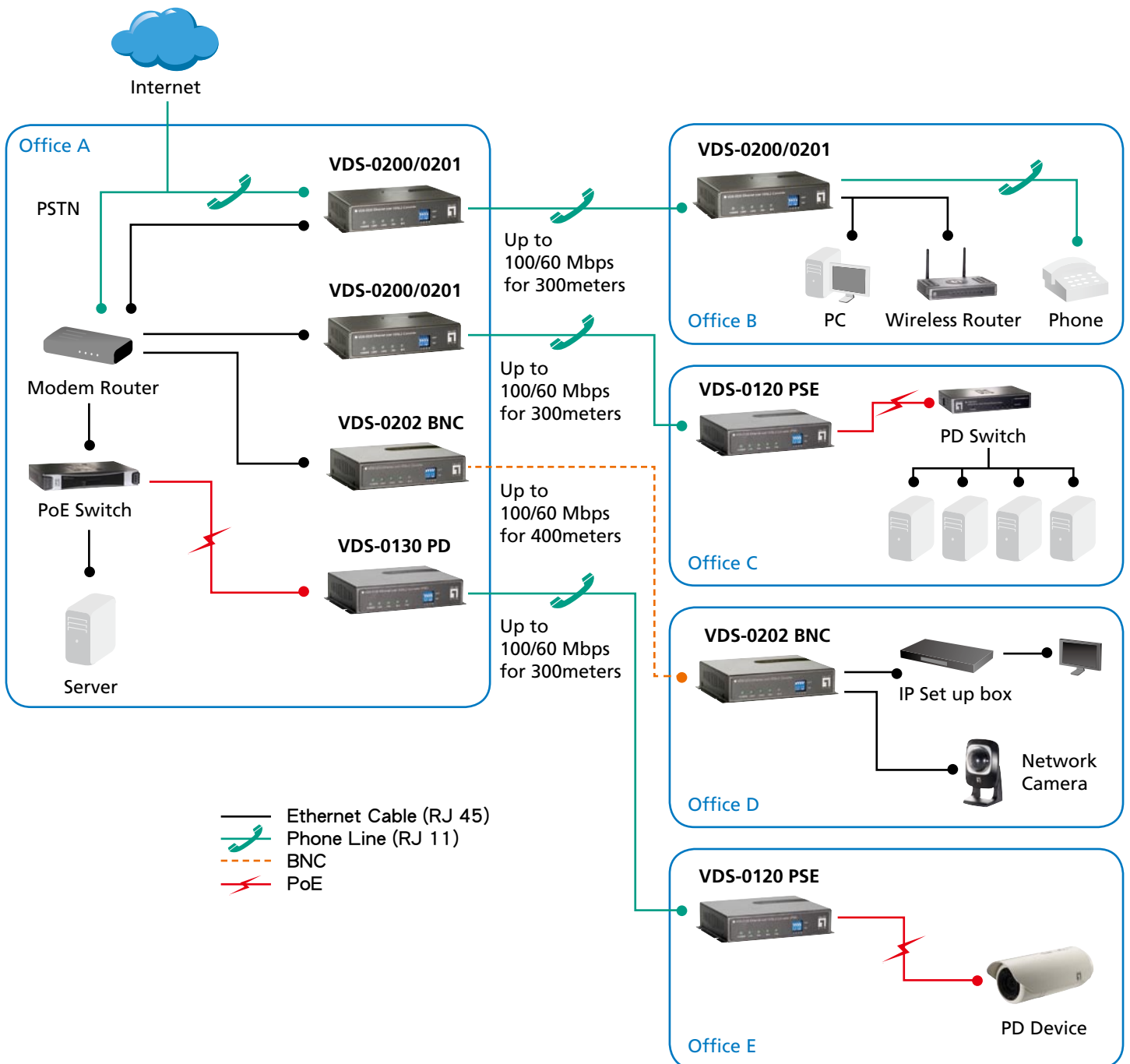
Operating: 0°C ~ 50°C

Humidity: 5% ~ 95% (non-condensing)

### EMI Certifications

CE, FCC Class B

## Product Diagram



**Order Information**

**VDS-0201:** Ethernet over VDSL2 Converter

**Package Contents**

VDSL2 Converter

Power Adapter

User Manual

Telephone Line