

11g Wireless Access Point

Product Overview

The LevelOne WAP-3000 11g Wireless Access Point acts as a bridge between wired Ethernet and Wireless 11b/g networks for wireless clients to access available wired and wireless networks.

Multiple Operation Modes

The WAP-3000 supports AP, AP Client, WDS bridging and Repeater wireless operation modes for flexible deployment and use within a standard Local Area Network.

For standard operations, the WAP-3000 connects to a LAN, broadband ADSL router or network switch and provides instant network access to connected wireless clients.

With WDS+AP mode the WAP-3000 is able to act as a bridge between two or more networks, combining them into a single network to provide wireless users with access to both networks.

In Repeater mode, the WAP-3000 extends the wireless area network to different locations.

Robust Wireless Security

The WAP-3000 provides 64/128-bit WEP encryption as well as WPA, WPA2 secured connectivity for securing the Wireless Area Network and to prevent unauthorized access.

Extended Wireless Coverage

The WAP-3000 Wireless Access Point is compliant with the IEEE 802.11b (11Mbps) and IEEE 802.11g (54Mbps) standards and features a high-quality radio chip that is able to provide directional area coverage for up to 50 meters indoors and 100 meters outdoors.

Plug-and-Play Expansion of Home/Office Network

The LevelOne WAP-3000 Wireless AP is an easy to install "plug-and-play" access point with an easy to use Web-based user interface. The WAP-3000 requires little set-up and configuration and features an LED display for quick monitoring of network errors and activity.



WAP-3000

Key Features

- IEEE 802.11b/g compliant Wireless Access Point suitable for extending an existing LAN
- Features a 1-port Fast Ethernet interface
- Provides a wide area coverage range
- Features WPA, WPA2, 64/128-bit WEP encryption for a secured wireless network
- Supports multiple wireless operation modes
- Full LED display panel for error detection and network monitoring
- Compact design for desktop or wall-mounting
- Plug-and-Play enabled for easy setup and configuration
- Web-based configuration interface

Digital Data Communications GmbH.

Zeche-Norm St. 25, 44319, Dortmund, Germany

All mentioned brand names are registered trademarks and property of their owners.
Technical specifications are subject to change without notice.

© 2008 All Rights Reserved

www.level1.com

Technical Specification

Network Interface

Standards

IEEE 802.3u Ethernet
IEEE 802.11b/g Wireless LAN

Network Interface

1x 10/100 Mbps RJ-45 port
1x Wireless Access Point

AP Radio Operation

Wireless Standards

802.11b: DSSS
802.11g: OFDM

Transmission Rate

1 ~ 54Mbps (auto sense)

Receiver Sensitivity

54Mbps: Typical -68dBm @ 10% PER (Packet Error Rate)
11Mbps: Typical -78dBm @ 8% PER (Packet Error Rate)

Wireless LAN Frequency Range

2.412 ~ 2.484 GHz ISM band (channels 1 ~ 14)

Modulation Schemes

DBPSK/DQPSK/CCK/OFDM

Media Access Protocol

CSMA/CA with ACK

Transmit Power

802.11g: Typical 15dBm
802.11b: Typical 18dBm

Antenna Type

One external 2dBi dipole antenna

Range Coverage

Indoor: Up to 50m
Outdoor: Up to 100m

Wireless Security

64/128-bits WEP Encryption/Decryption
WPA, WPA2,, WPA-PSK, WPA2-PSK

Device Management

OS Supported

Windows 2000(SP4)/XP/Vista/MAC OSX/Linux

User Interface

Web-based configuration

Firmware Upgrade

HTTP

Physical Specifications

External Power Supply

7.5V, 1A

LED

Power, Link/Activity

Temperature

Operating: 0°C ~ 40°C
Storage: -25°C ~ 70°C

Humidity

10% ~ 90% (Non-condensing)

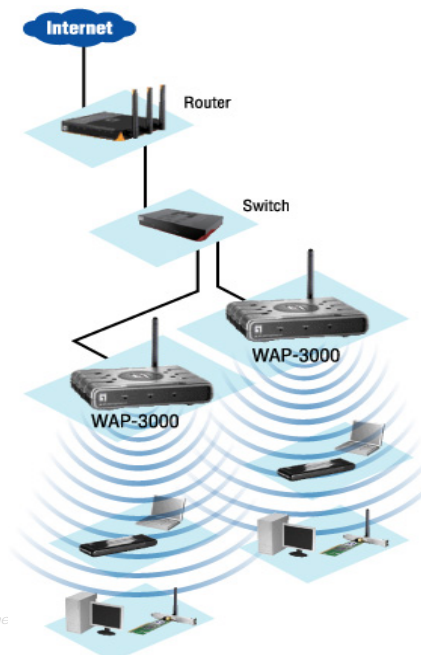
Dimension & Weight

146mm (L) x 113mm (W) x 32mm (H)

Certifications

FCC, CE, ETS

Product Diagram



Digital Data Communications GmbH.

Zeche-Norm St. 25, 44319, Dortmund, Germany

All mentioned brand names are registered trademarks and property of their owners.
Technical specifications are subject to change without notice.

© 2008 All Rights Reserved

www.level1.com

Order Information

WAP-3000: 11g Wireless Access Point

Package Contents

- WAP-3000 11g Wireless Access Point
- Power Adapter
- LAN Cable
- User Guide
- Quick Installation Guide