



# 300Mbps Wireless Gigabit Router



WGR-6012

H/W Version: 1

The LevelOne WGR-6012 is the center of your home or office network, you can share a high-speed Internet connection, files and multi-player games with flexibility, speed and simplicity! It supports wireless speeds up to 300Mbps by using LevelOne's *N\_Max* wireless technology, while maintaining compatibility with legacy 801.11b/g/n devices. A built-in 4 port full-duplex 10/100/1000 Switch to connect your wired-Ethernet devices brings it all together to maximize your high-speed Internet access.

## Wi-Fi Protected Set up

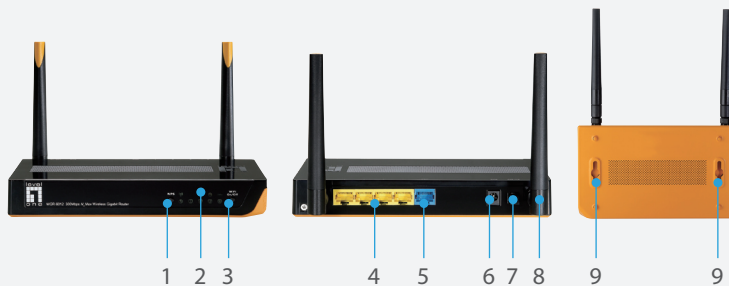
The LevelOne WGR-6012 incorporates WPS (Wi-Fi Protected Setup). By simply clicking the WPS button, you are able to setup a secure wireless connection between your router and WPS supported devices.

## Wireless On/Off Button

The Wireless radio is one of the most power intensive components. With a simple push of a button, you can disable the wireless radio when it's not needed.

## Green Power Saving

When there are no wireless devices connected to the WGR-6012, it will automatically only keep one antenna active in low power. So when you're sleeping, or away from home or office, wireless signals of your router are turned off which saves power and reduces the risk of someone stealing your internet connection.



1. Wi-Fi Protected Setup (WPS) Button
2. LED Indicators
3. Wireless On/Off Button
4. LAN Port
5. WAN Port
6. Power Port
7. Power On/Off Button
8. Detachable Antenna
9. Wall-Mountable

## Key Features

- 2 Antennas with 2T/2R MIMO Technology for Wireless Data Rates of up to 300Mbps
- Compatible with IEEE 802.11b/g/n Standards
- Integrated 4 x 10/100/1000Mbps Ethernet LAN Ports
- Provides WDS Mode for Creating Separate Wireless Networks into One
- Simple Security Control with One-Button for Wi-Fi Protected Setup (WPS)
- Concurrent Network Address Translation (NAT) Sessions up to 20,000
- Secured Wireless Encryption with WEP, WPA and WPA2
- Environmentally Friendly with Smart Power-Saving Features
- Integrated Firewall and Quality of Service (QoS) to Manage Traffic
- Quick and Easy Installation Wizard

## Works Well With



**GSW-0807**  
8-Port Gigabit Switch



**GNS-2000**  
2-Bay Gigabit Network Storage

## Technical Specification

### Power Saving

Active Link Detection for LAN Ports  
Low Power Wireless Mode  
Wi-Fi Disable Button

### LAN-Interface

4 x 10/100/1000Mbps Auto-MDIX RJ-45 Port

### WAN-Interface and Standards

1 x 10/100/1000Mbps Auto-MDIX RJ-45 Port  
Static-IP Address, Dynamic IP Address (DHCP Client),  
PPPoE, PPTP, L2TP

### Connection Scheme

Auto Connect-on-Demand/Auto-Disconnect  
Auto Reconnect, Manually Connect/Disconnect

### Wireless Data Transfer Rate

802.11n: 300 ~ 78Mbps (20/40Mhz)  
802.11g: 54 ~ 6Mbps  
802.11b: 11 ~ 1Mbps

### Concurrent NAT Session

Concurrent Sessions up to 20,000

### Wireless Security

WEP 64/128-bit Web share key encryption  
WPA, WPA2, 802.1x RADIUS support  
128-bit TKIP/AES encryption  
SSID Broadcast On/Off  
Wi-Fi Protect Setup (WPS) Push Button Support

### Transmit Power@Normal Temp Range

IEEE 802.11b: 19.92 dBm  
IEEE 802.11g: 19.83 dBm  
IEEE 802.11n HT20: 19.90 dBm  
IEEE 802.11n HT40: 19.65 dBm

### Access Point Modes

WDS - One-to-Many Peer APs (Max: 4)  
AP Client

### Number of Channels

Ch.1 ~ 11 USA  
Ch.1 ~ 13 EU

### Operating Frequency

2.4 ~ 2.4835 GHz

### Antenna

2 x 2dBi Detachable Antennas

### Firewall

DoS Detection  
NAT Firewall with SPI mode  
Virtual Server, DMZ  
Schedule-Based MAC, IP, Domain and URL Filtering

### QoS Support

User Friendly Quality of Service Interface  
Port Number and IP Address Traffic Prioritization  
802.11e WMM Supported

### Other Features

DDNS Supported, UPnP Supported, NTP Time Server, VPN Pass-Through (PPTP, IPSec, L2TP)

### Management

Quick Installation Wizard and Easy Setup Utility  
Web-Based GUI Configuration  
Syslog Monitoring, Email Alert  
SNMP Supported

### Firmware Upgrade

Web-based (HTTP)

### Supported Operating Systems

Windows 2000/XP/Vista/7

### Power Adapter

DC 12V / 1A

### Operating Temperature

0°C ~ 40°C / 85% Humidity

### Storage Temperature

-20°C ~ 70°C / 95% Humidity

### Dimensions: (L x W x H)

187mm x 112mm x 29mm

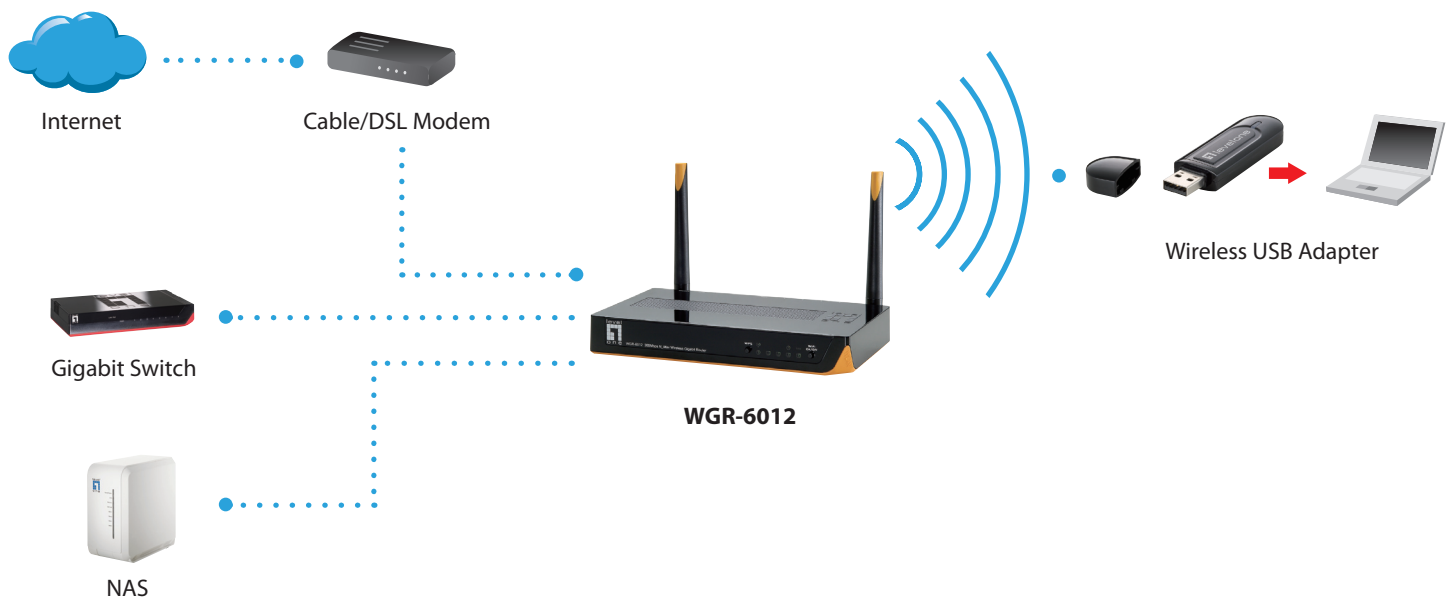
### Certifications

CE, FCC

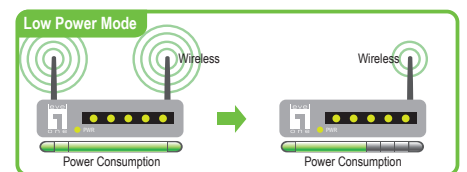
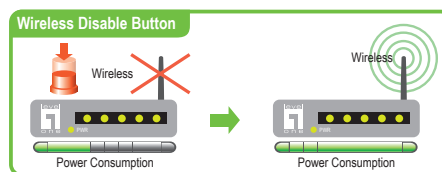
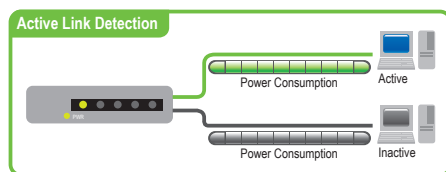
### Standard Compliant

IEEE 802.11b, IEEE 802.11g, IEEE 802.11n, IEEE 802.11i,  
IEEE 802.1x, IEEE 802.11e, IEEE 802.3x, IEEE 802.3, IEEE 802.3u

## Product Diagram



## Power Saving by



## Order Information

### Package Content

### **WGR-6012:** 300Mbps Wireless Gigabit Router

- WGR-6012 x1
- RJ-45 Ethernet LAN Cable x1
- Antenna x 2
- Power Adapter x1
- Quick Installation Guide x1
- CD Manual/Utility x1