



LevelOne IP Camera 中文快速安裝手冊

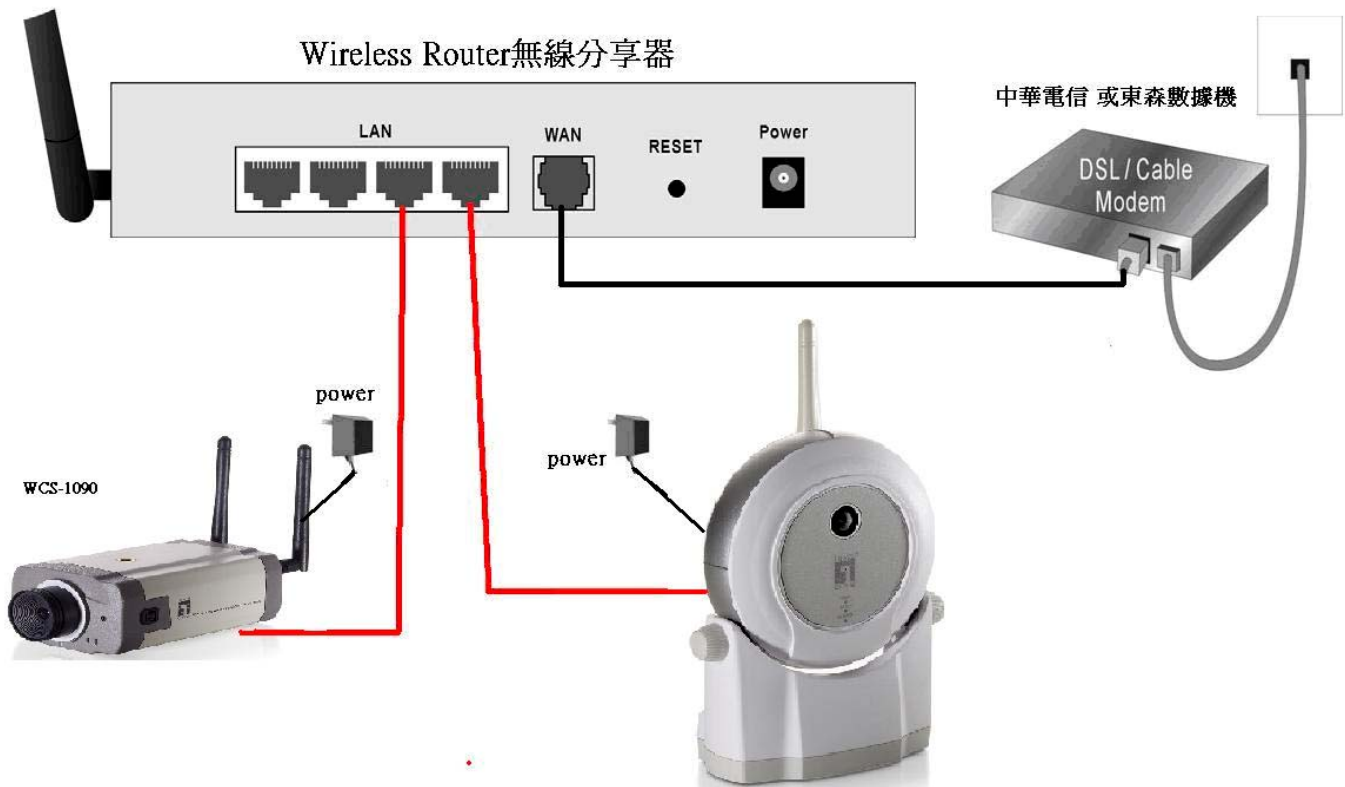
手冊適用於：FCS-0010 / WCS-0010 / FCS-1091 / WCS-1090



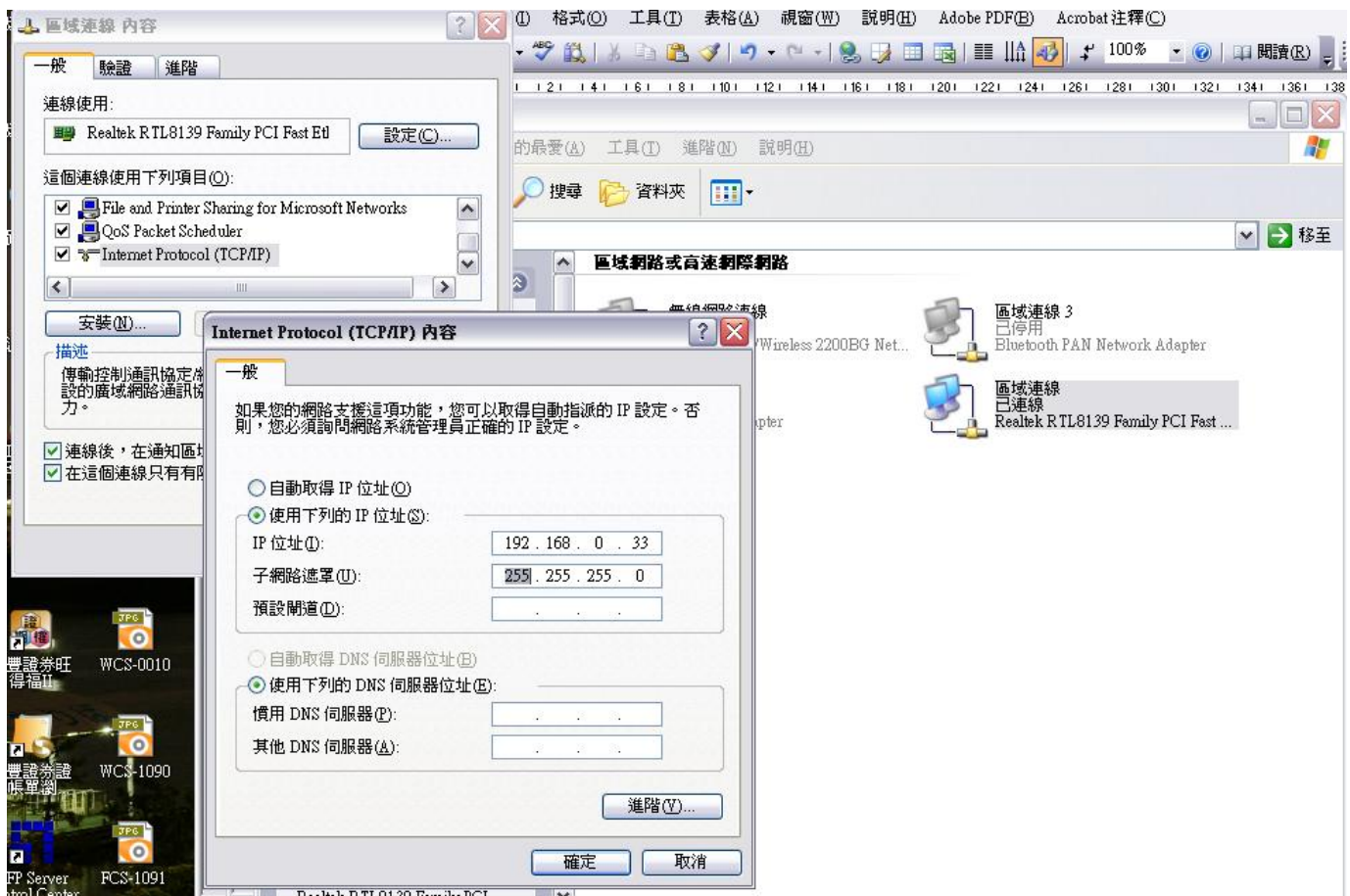
使用前請注意下列事項：

1. 如果您連接在分享器後面請先插入 RJ45 網路線再插入電源線。
2. 如果您是無分享器裝置與電腦直接對接請將您電電腦的網卡設定成固定 ip 192.168.0.x.

分享器連接圖

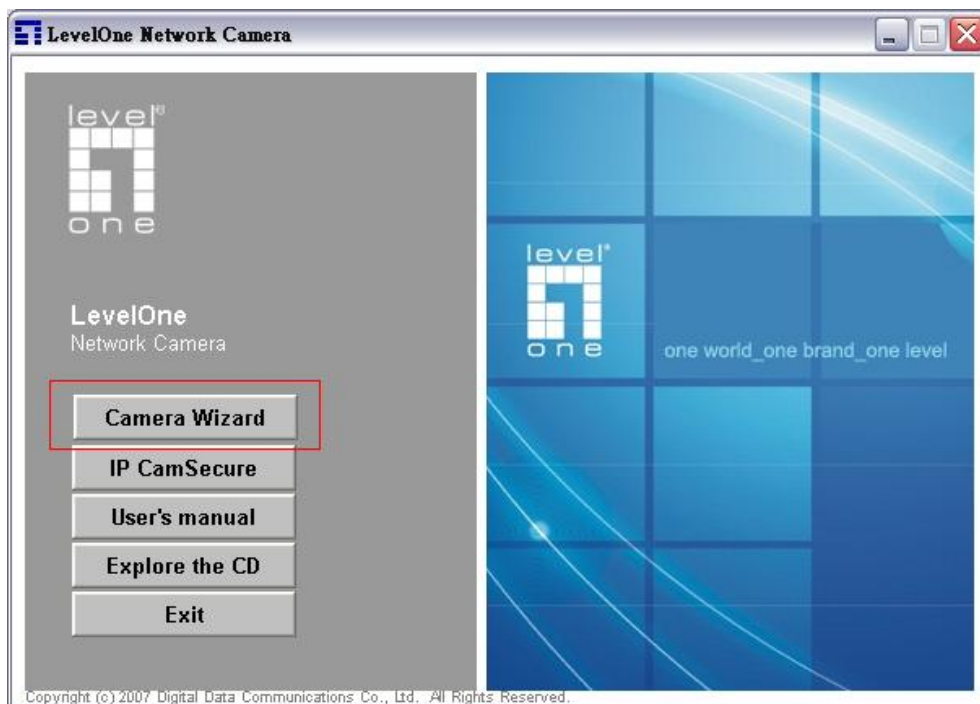


固定 IP 設定圖



軟體安裝

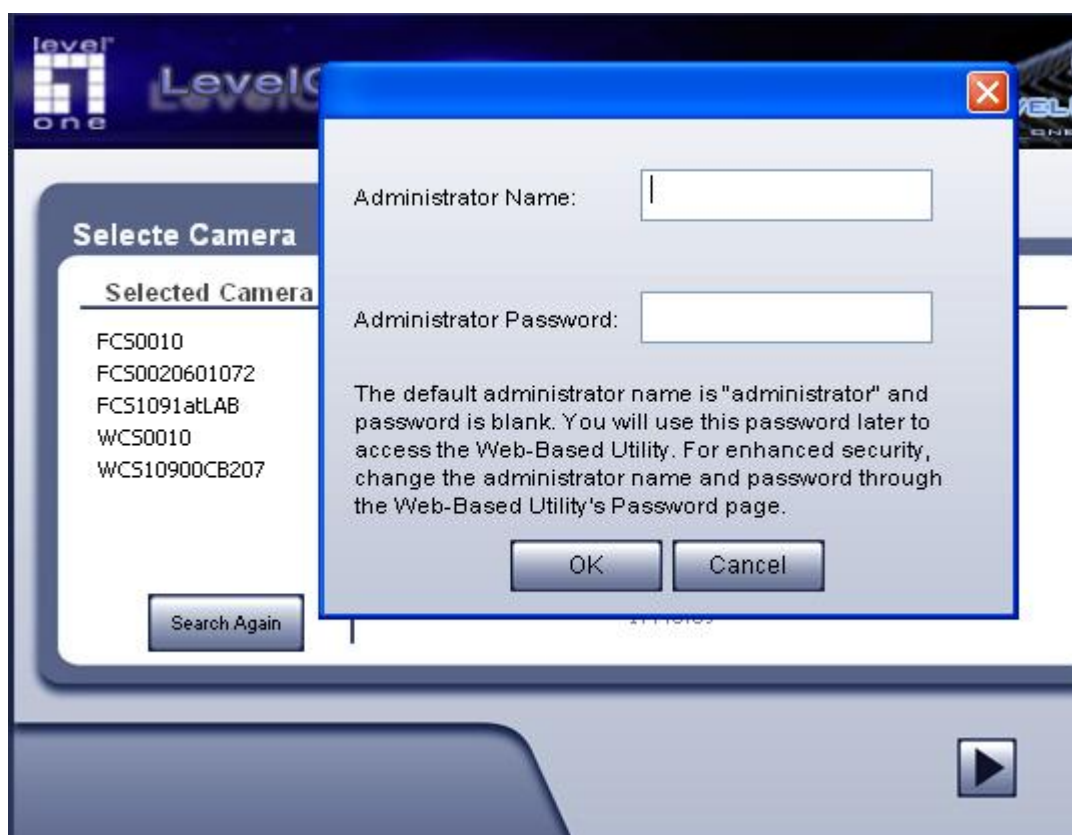
將 **LevelOne IP 網路攝影機** 包裝內所附的 CD-ROM 放入光碟機中
螢幕會自動出現 **LevelOne IP 網路攝影機** 的安裝畫面. 如果沒看到安裝畫面, 請到光碟片的路徑中, 手動安裝。
點選 **“Camera Wizard”**



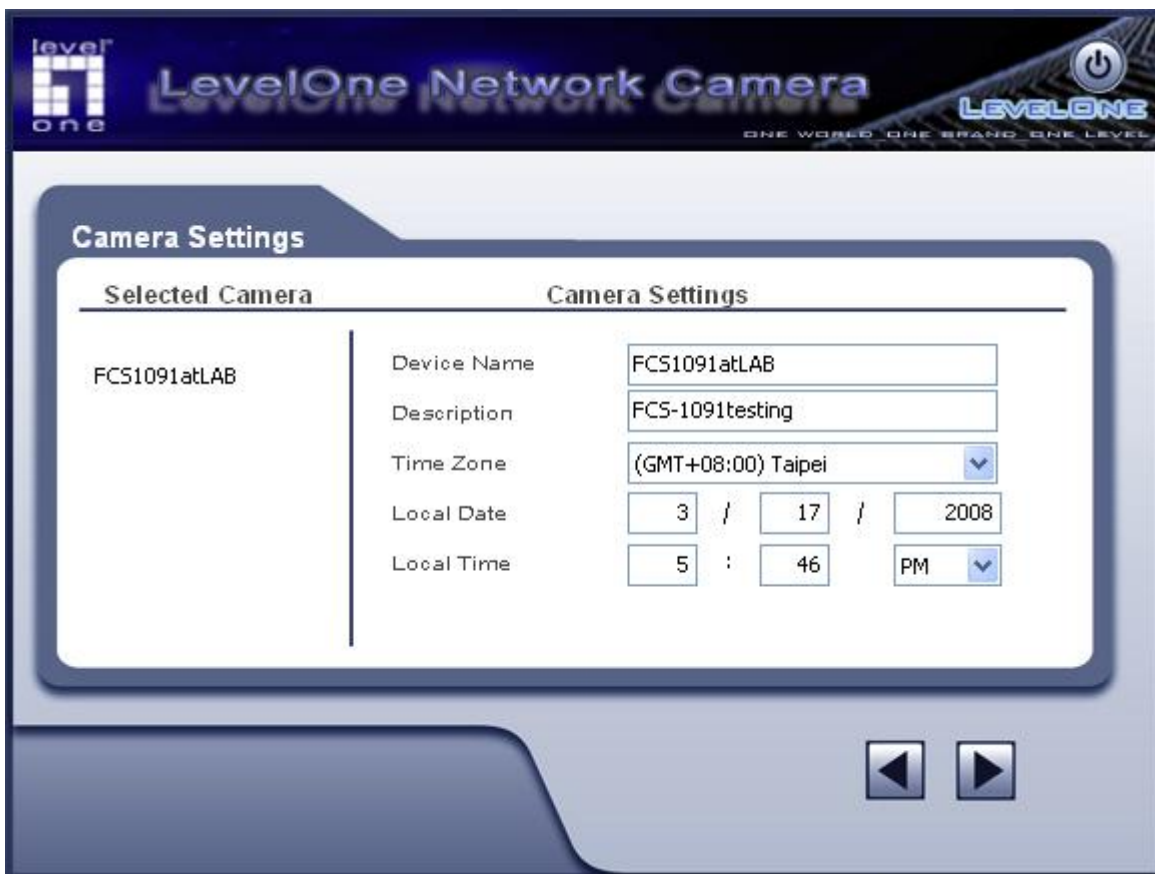
1.出現 Searching for network camera.在尋找中請等待.



2.請輸入 IP Camera 的帳號與密碼.(預設帳號 administrator 並無密碼)

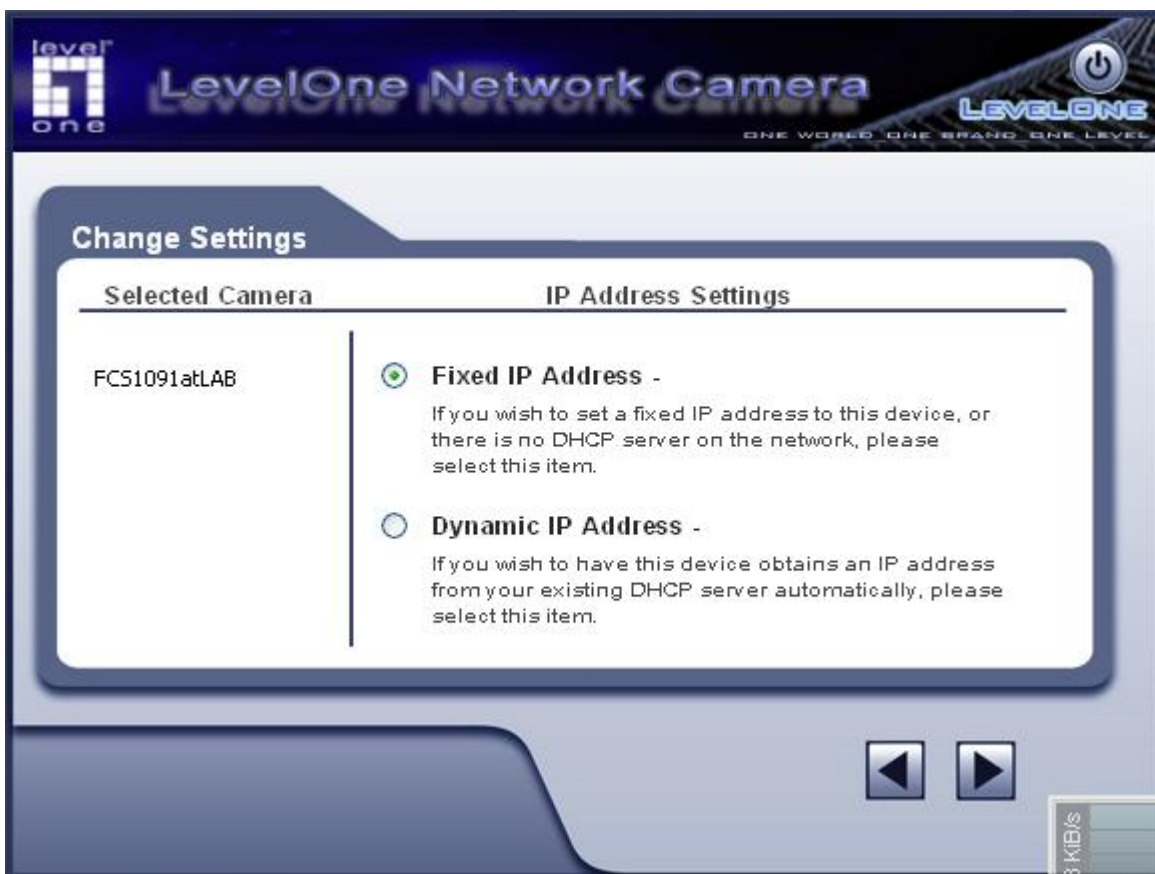


3.找到您的 IP Camera 請按右下角往下一頁

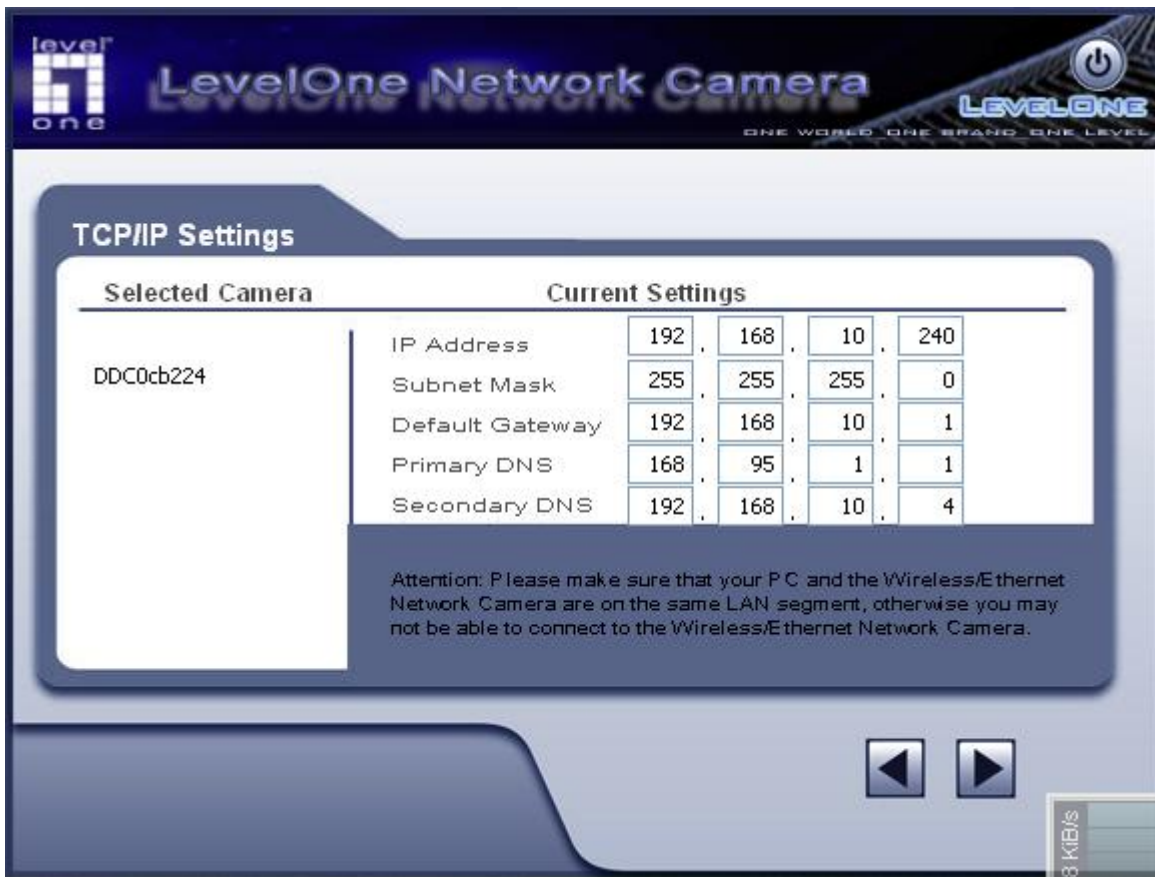


4.如果您要設定固定IP 請選擇Fixed IP Address. 然後請看到第5步驟

如果您要選擇動態 IP 從 DHCP 伺服器取得請選擇 Dynamic IP Adress. 然後請看到第 6 步驟



5. 固定 IP 設定



The screenshot shows the 'TCP/IP Settings' page for a LevelOne Network Camera. The page header includes the LevelOne logo and the slogan 'ONE WORLD ONE BRAND ONE LEVEL'. The main content area is titled 'TCP/IP Settings' and contains a table with two columns: 'Selected Camera' and 'Current Settings'. The selected camera is 'DDC0cb224'. The current settings are as follows:

Selected Camera	Current Settings				
DDC0cb224	IP Address	192	168	10	240
	Subnet Mask	255	255	255	0
	Default Gateway	192	168	10	1
	Primary DNS	168	95	1	1
	Secondary DNS	192	168	10	4

Below the table, there is an attention message: 'Attention: Please make sure that your PC and the Wireless/Ethernet Network Camera are on the same LAN segment, otherwise you may not be able to connect to the Wireless/Ethernet Network Camera.' At the bottom right, there are navigation arrows and a speed indicator showing '3 KiB/s'.

6. 確認您從 DHCP 取得到的 IP 是否正確

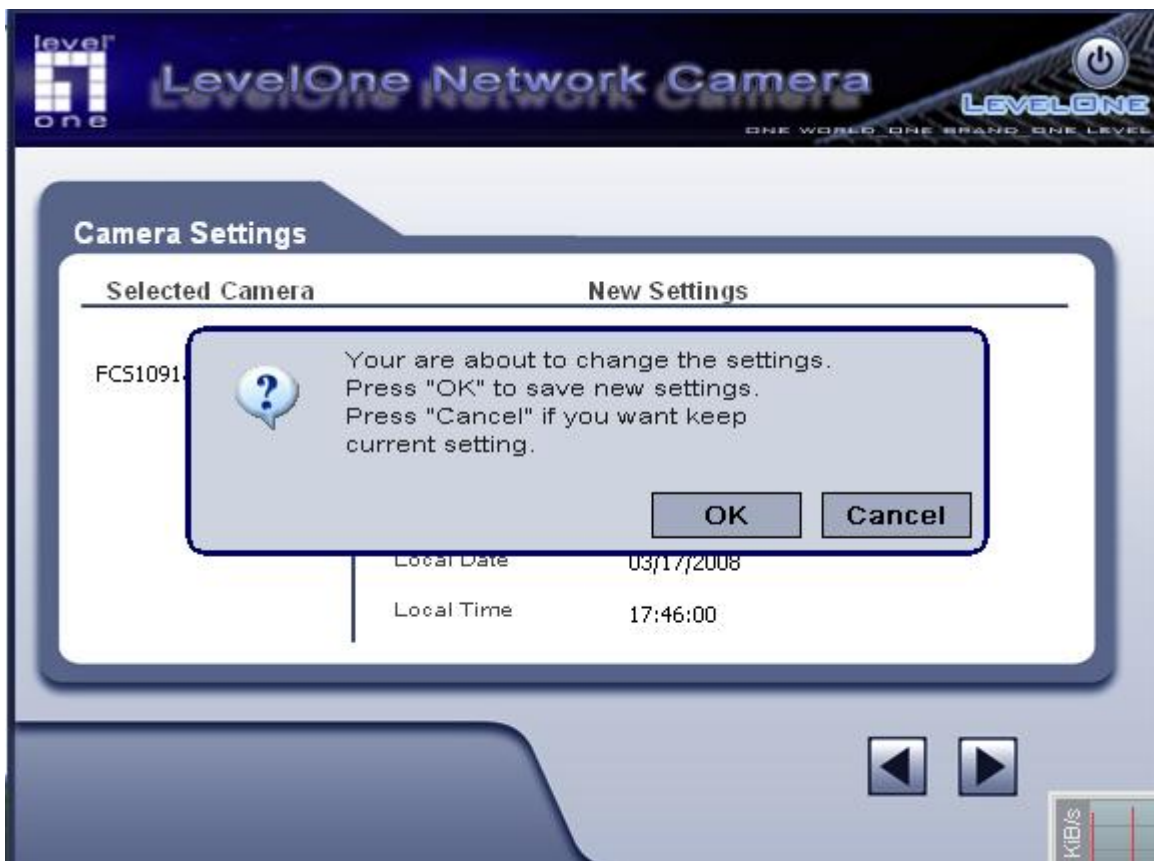


The screenshot shows the 'Camera Settings' page for a LevelOne Network Camera. The page header includes the LevelOne logo and the slogan 'ONE WORLD ONE BRAND ONE LEVEL'. The main content area is titled 'Camera Settings' and contains a table with two columns: 'Selected Camera' and 'New Settings'. The selected camera is 'FCS1091atLAB'. The new settings are as follows:

Selected Camera	New Settings	
FCS1091atLAB	Device Name	FCS1091atLAB
	IP Address	192.168.10.240
	Subnet	255.255.255.0
	Default Gateway	192.168.10.1
	Local Date	03/17/2008
	Local Time	17:46:00

At the bottom right, there are navigation arrows and a speed indicator showing '3 KiB/s'.

7.確定後請按下 **OK**

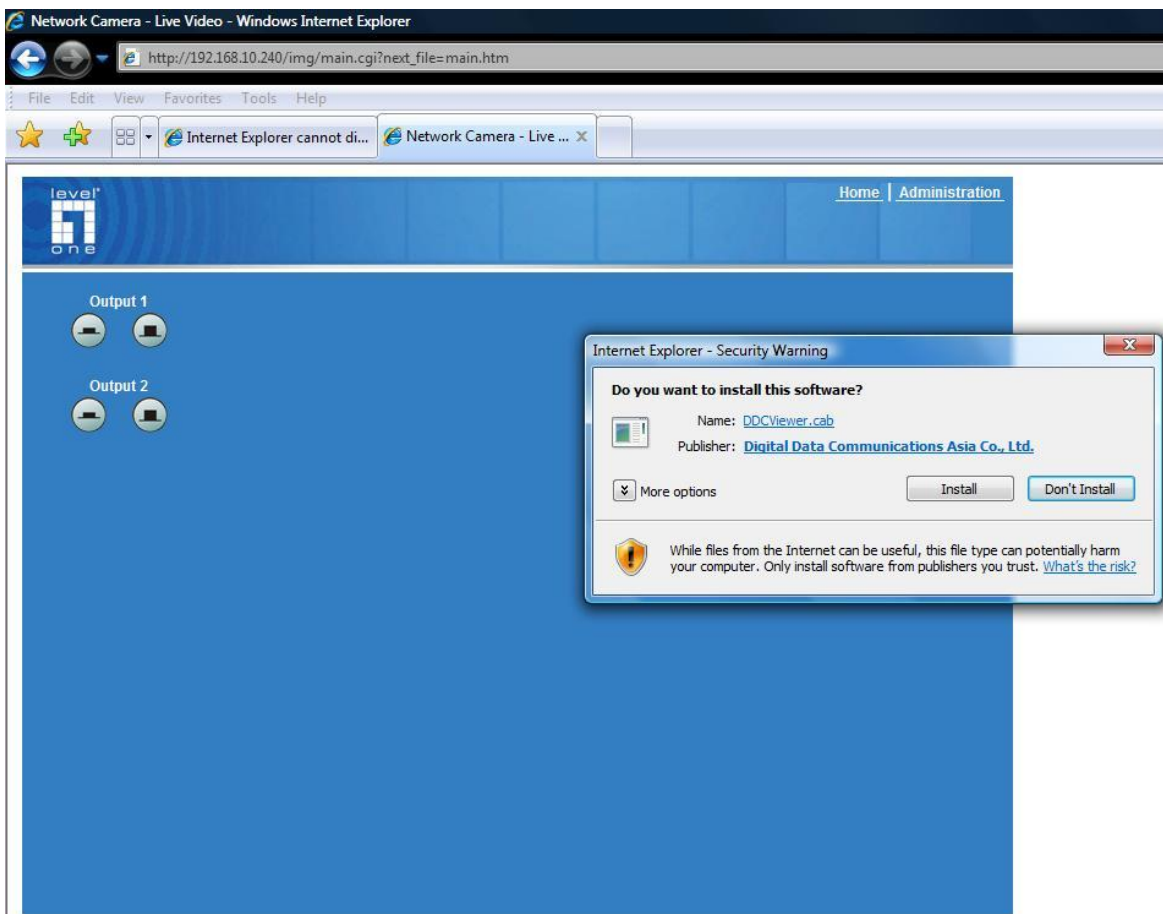


8.然後開啓 **IE** 瀏覽器在網址列上輸入您設定的 IP address.
開啓後輸入您的使用者名稱與密碼。



9. 按下右上角的 view video 會出現請您安裝 IP Camera 的解碼軟體.

如果沒跳出此視窗請確認您的 IE 瀏覽器是否有安全性太高請設定回成預設值, 或請您先關閉您的防火牆軟體.



10. 安裝完成.

